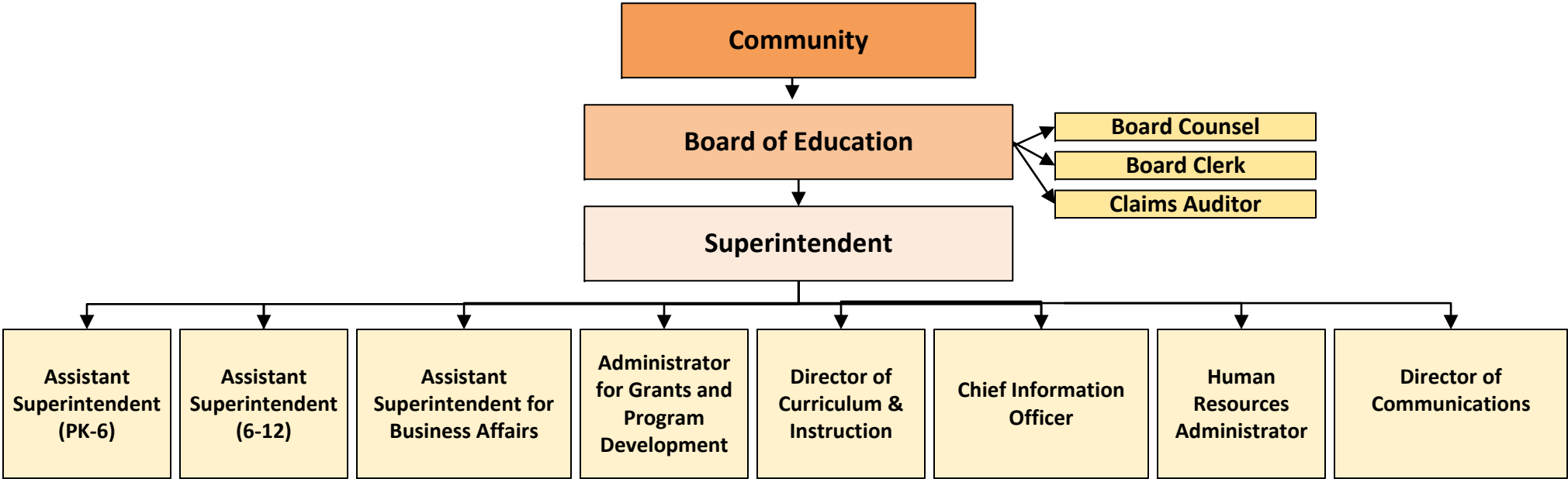


**City School District of Albany
Organizational Chart 2016-2017**





**City School District of Albany
Organizational Chart 2016-2017**

Board of Education



Superintendent



Assistant Superintendent (PK-6)

Assistant Superintendent (6-12)

Assistant Superintendent for Business Affairs

Elementary Principals
District Improvement Manager
Director of Early Childhood
Director of Professional Review
Medical/Nurses

Secondary Principals
Director of PE/Health/Athletics
Director English as a New Language
and Refugee Services
Director of Special Education
Director of Pupil Personnel Services

Claims Auditor*
Treasurer*
Director of Business Operations
Director of Food Service
Director of Security
Supervisor of Transportation
Supervisor of Buildings & Grounds
Tax Collector

*Directly reports to BOE, indirectly reports to Assistant Superintendent



**City School District of Albany
Organizational Chart 2016-2017**

Board of Education

Superintendent

